



U.S. Coast Guard Sector Maryland-NCR

2401 HAWKINS POINT ROAD, BLDG 70

BALTIMORE, MD 21226-1791

Phone: (410) 576-2693

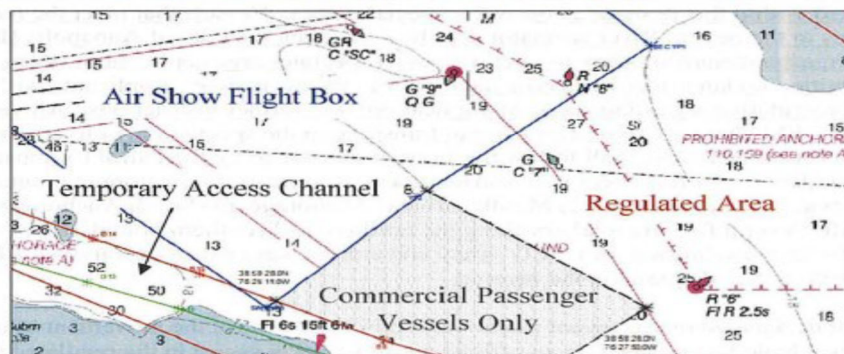
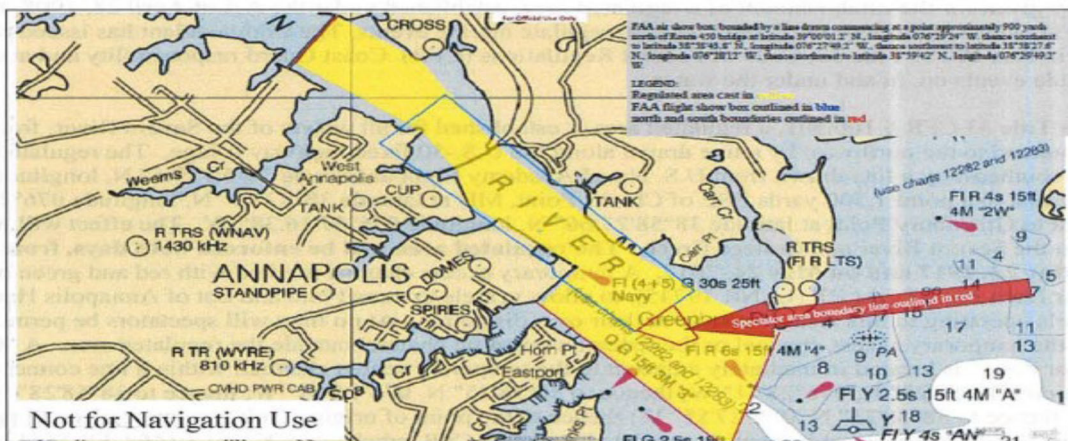
SecMDNCRSCC@uscg.mil

MARINE SAFETY INFORMATION BULLETIN 06-24

May 18, 2024

Special Local Regulations; Marine Events within the Fifth Coast Guard District (United States Naval Academy (USNA) Blue Angels Air Show)

Notice is hereby given for the establishment of a regulated area, established under the authority in Title 46, United States Code (U.S.C.) § 70041, which authorizes the Coast Guard to regulate marine events. The Commandant has issued regulations on this subject in Part 100 of Title 33, Code of Federal Regulations (CFR). Coast Guard responsibility and authority are broad and include events on, in, and under the water.



southeast boundary of regulated area depicting Commercial Passenger Vessel Spectator Arc
NOT FOR NAVIGATION USE

As described in Table 2 to Paragraph (i)(2) in 33 CFR 100.501, a regulated area is established for all waters of the Severn River, from shoreline to shoreline, bounded to the northwest by a line drawn along the U.S. Highway 50 fixed highway bridge. The regulated area is bounded to the southeast by a line drawn from U.S. Naval Academy Light at latitude 38°58'39.5" N., longitude 076°28'49" W., thence southeast to a point 1,500 yards ESE of Chinks Point, MD at latitude 38°57'41" N., longitude 076°27'36" W., thence northeast to Greenbury Point at latitude 38°58'27.7" N., longitude 076°27'16.4" W. The effect will be to restrict vessel traffic on the Severn River

and College Creek. The regulated area will be enforced from 9:30 a.m. to 5 p.m. on both days, May 21, 2024 (Tuesday) and May 22, 2024 (Wednesday). During the event, a temporary access channel will be established near Horn Point Light HP (LLNR 19745), to allow vessels to transit into and out of Annapolis Harbor; vessels operating in this area will do so at their own discretion. This channel will be delineated by red and green unlit floating markers, which will be set on Monday, May 20, 2023, and removed after the event. At no time will spectators be permitted to obstruct either the temporary access channel or the federal navigation channel outside the regulated area. A "Commercial Vessel Spectator Zone" is located immediately adjacent to the temporary access channel, bounded by a line commencing at latitude 38°58'38.2" N., longitude 076°27'56.9" W., thence southeast to latitude 38°58'24.9" N., longitude 076°27'47.6" W., thence west to latitude 38°58'22.3" N., longitude 076°27'54.5" W., thence northwest to latitude 38°58'28.3" N., longitude 076°28'11" W., thence east to point of origin.

The boundary of the Commercial Vessel Spectator Zone will be delineated by yellow unlit floating markers. As described in Paragraph (h)(1) Table 2 in 33 CFR 100.501, only commercial small passenger vessels holding a valid Certificate of Inspection regulated under 46 CFR Subchapters K or T (46 CFR 114.110 or 175.110) will be authorized within this designated on-water spectator area. Vessels that meet these requirements may request access to the Severn River spectator area by contacting the City of Annapolis Harbormaster at (410) 263-7973 or email harbormaster@annapolis.gov to obtain a vessel spectator area application. Vessel spectator area applications shall be submitted no later than 10 calendar days prior to the event date. Applicants will be notified by the Captain of the Port or representative regarding status of applications and further instructions. All vessels shall contact the Event PATCOM on VHF-FM channels 16 or 22A prior to transiting to the spectator area to confirm entry approval. Vessels approved for spectator area access shall follow the instructions issued by the Event PATCOM, when entering the regulated area. The regulations for this event will restrict access to some of the anchorage grounds listed at 33 CFR 110.159, Annapolis Harbor, MD, specifically (2) Middle Ground Anchorage, (3) South Anchorage and (4) Naval Anchorage for Small Craft. Several orange inflatable floating markers will be placed at various locations across the waterway to delineate buffer areas near the northern and southern boundaries of the air show box used for USCG safety and enforcement patrol operations on May 21, 2024 (Tuesday) and May 22, 2024 (Wednesday). All coordinates reference North American Datum 1983. **Please see the diagram on the previous page.**

The Captain of the Port may assign one or more official patrol vessels, as described in [33 CFR 100.40](#). The patrol vessels and Event PATCOM can be contacted on Marine Band Radio, VHF-FM Channel 16 or 22A. The Event PATCOM may terminate the event, or the operation of any vessel participating in the marine event, at any time if deemed necessary for the protection of life or property. The Event PATCOM or Official Patrol may forbid and control the movement of all vessels and persons in the regulated area. When hailed or signaled by an Official Patrol vessel, the person or vessel being hailed must immediately comply with all directions given. Failure to do so may result in expulsion from the area, citation for failure to comply, or both. The operator of a vessel in the regulated area must stop the vessel immediately when directed to do so by an Official Patrol and then proceed only as directed. A person or vessel must comply with all instructions of the Event PATCOM or Official Patrol. A vessel operator may request permission to enter and transit through the regulated area by contacting the Event PATCOM or Official Patrol on VHF-FM Channel 16. When authorized to transit through the regulated area, the vessel must proceed at the minimum speed necessary to maintain a safe course that minimizes wake near the event area.

Captain of the Port (COTP) means the Commander, U.S. Coast Guard Sector Maryland National Capital Region or any Coast Guard commissioned, warrant or petty officer who has been authorized by the Captain of the Port to act on his behalf.

Event Patrol Commander (Event PATCOM) means a commissioned, warrant, or petty officer of the U.S. Coast Guard who has been designated by the Commander, Coast Guard Sector Maryland-National Capital Region. Official Patrol means any vessel assigned or approved by Captain of the Port with a commissioned, warrant, or petty officer on board and displaying a Coast Guard ensign, or any state or local law enforcement vessel approved by the Captain of the Port in accordance with current local agreements.

Participant means any person or vessel registered with the event sponsor as participating in the U.S. Naval Academy Blue Angels Air Show event or otherwise designated by event sponsor as having a function tied to the event.

Non-participant means a person or vessel not registered with the event sponsor either as a participant or an Official Patrol vessel.

NOTE: Per the Federal Aviation Administration (FAA) Notice to Air Mission (NOTAM) 0521-24 and 0522-24, no persons are allowed to operate manned or unmanned aerial vehicles within 5 NM of the Annapolis Airshow Show center from the surface to 15,000 feet MSL centered on position latitude 38°59'12"N, longitude 76°28'48"W. All persons desiring additional information are encouraged to review the NOTAM 3/4132 and reach out to the listed contact.

PENALTY: Vessels or persons violating this section may be liable pursuant to 46 U.S.C. 70041(d)(1)(B)-(D). Under 33 CFR 27.3 (Penalty Adjustment Table), the maximum civil monetary penalty for violation is \$11,162 U.S. for vessel owners and persons in charge (unlicensed) and \$5,580 U.S. for all other persons.

**KATE M. NEWKIRK
LCDR, U.S. COAST GUARD
CHIEF, WATERWAYS MANAGMENT
USCG SECTOR MARYLAND-NCR**